

*Montreal
Economic
Institute*

Ideas for a More Prosperous Nation



Montreal
Economic
Institute

Ideas for a More Prosperous Nation

SUBURBANIZATION & AUTOMOBILE USE: MYTHS AND REALITIES

presentation by

Martin Masse

(Director of Research and Publications)

Concordia University (Montreal)

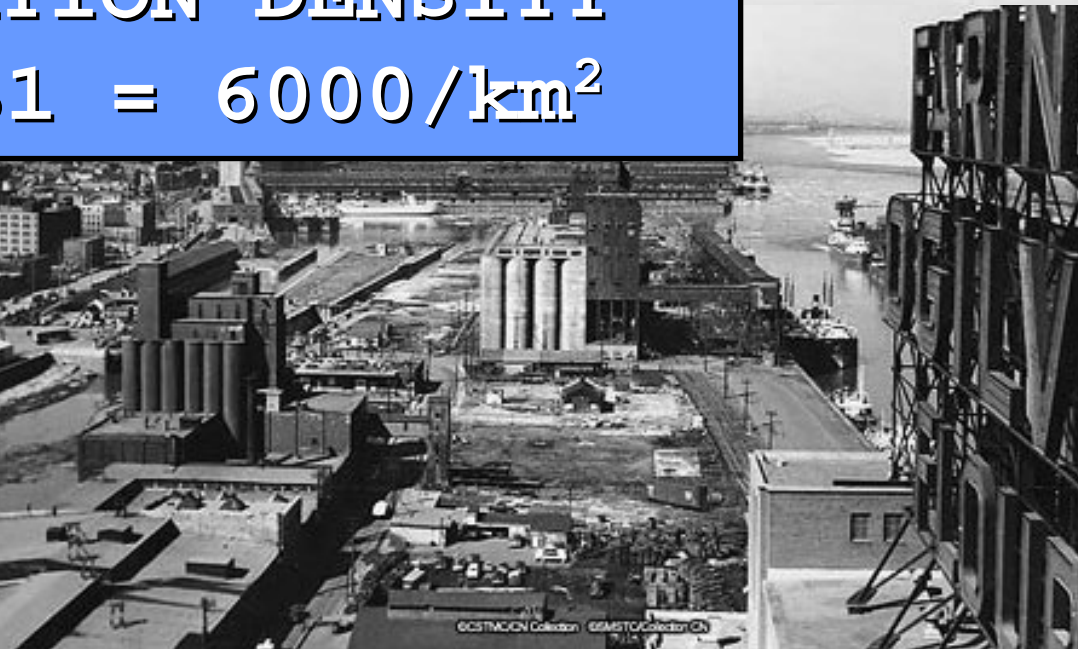
Wednesday, November 1st, 2006

www.iedm.org



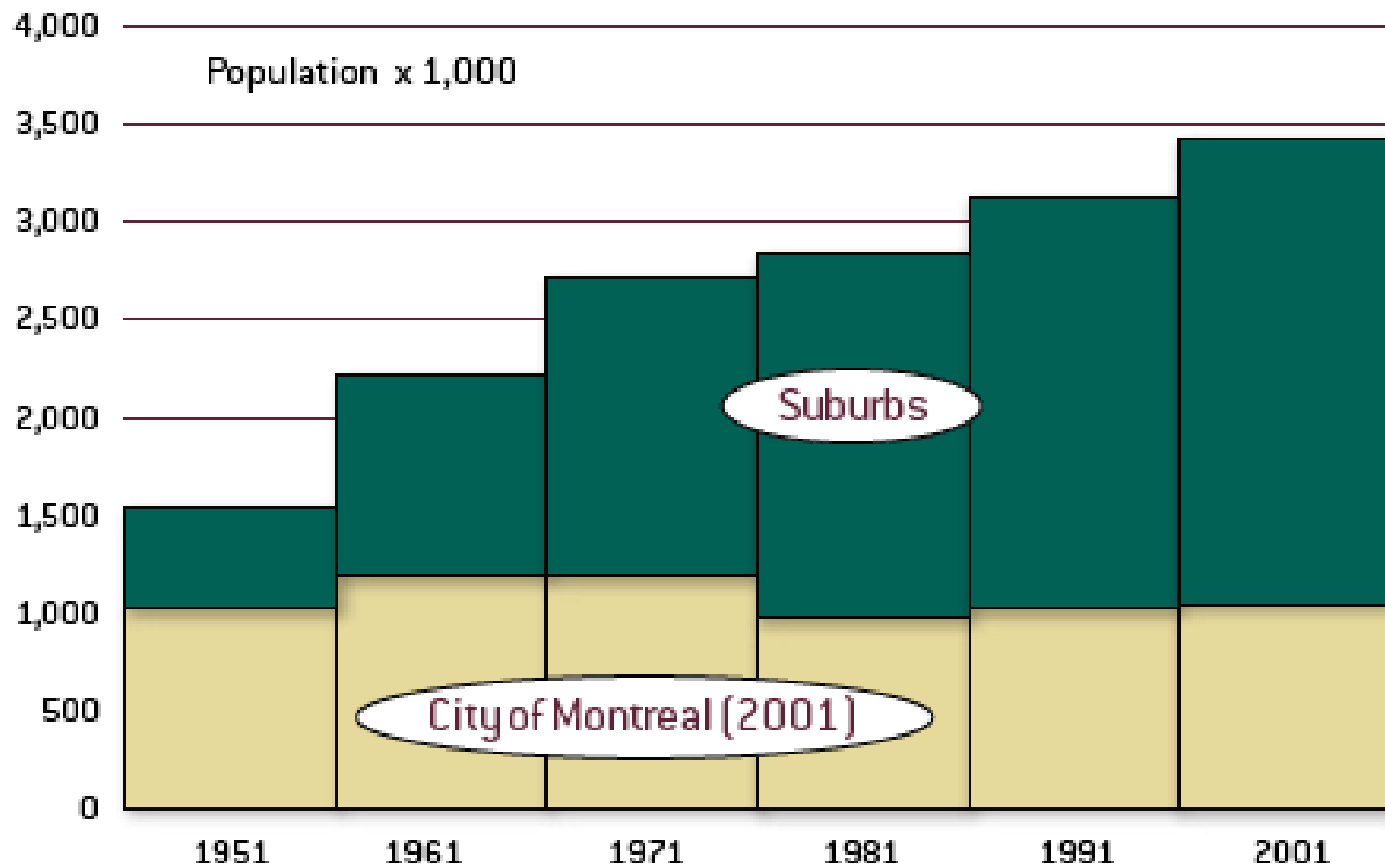


**MONTREAL URBAN AREA
POPULATION DENSITY
IN 1931 = 6000/km²**



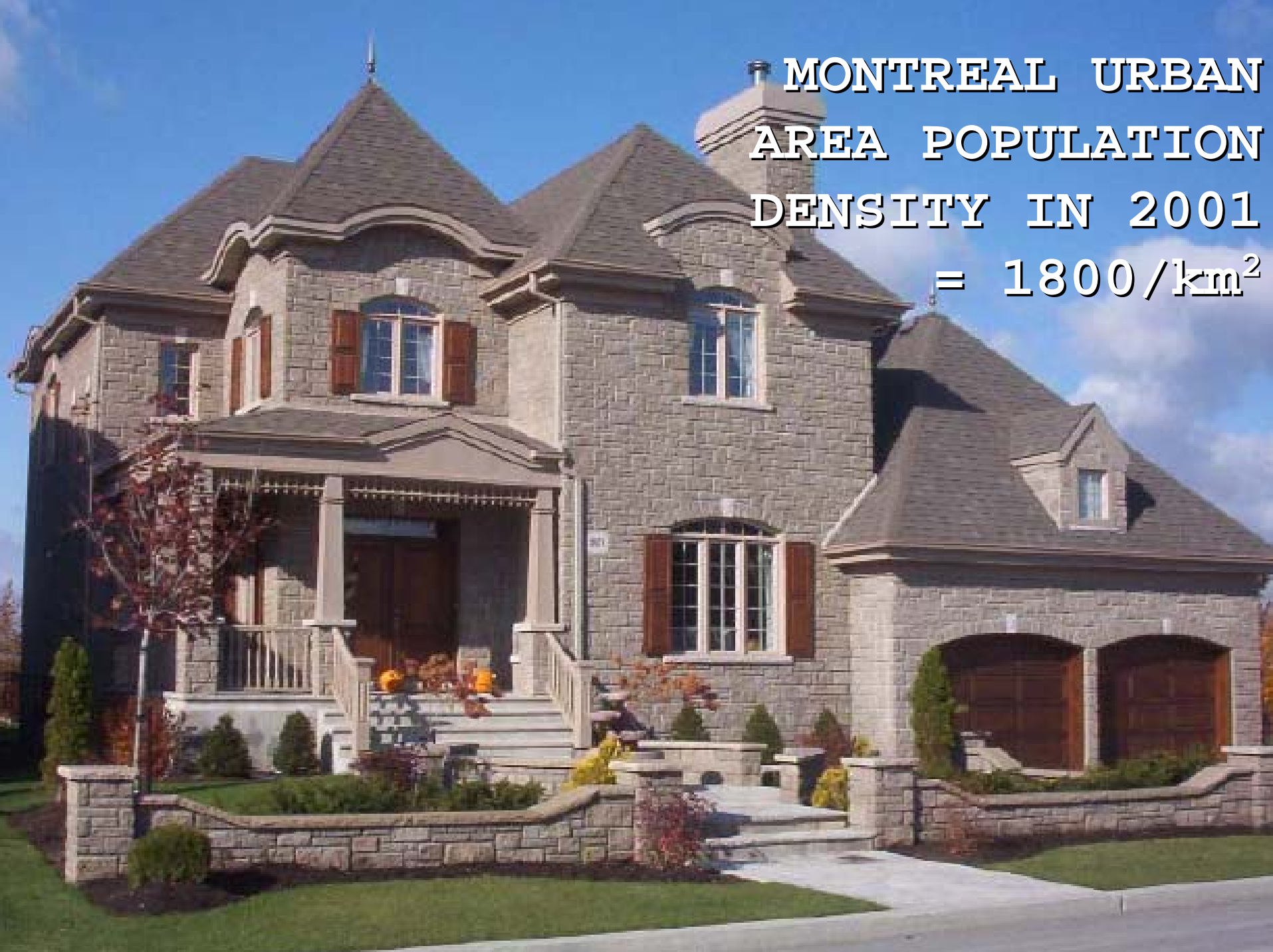
Core & Suburban Population

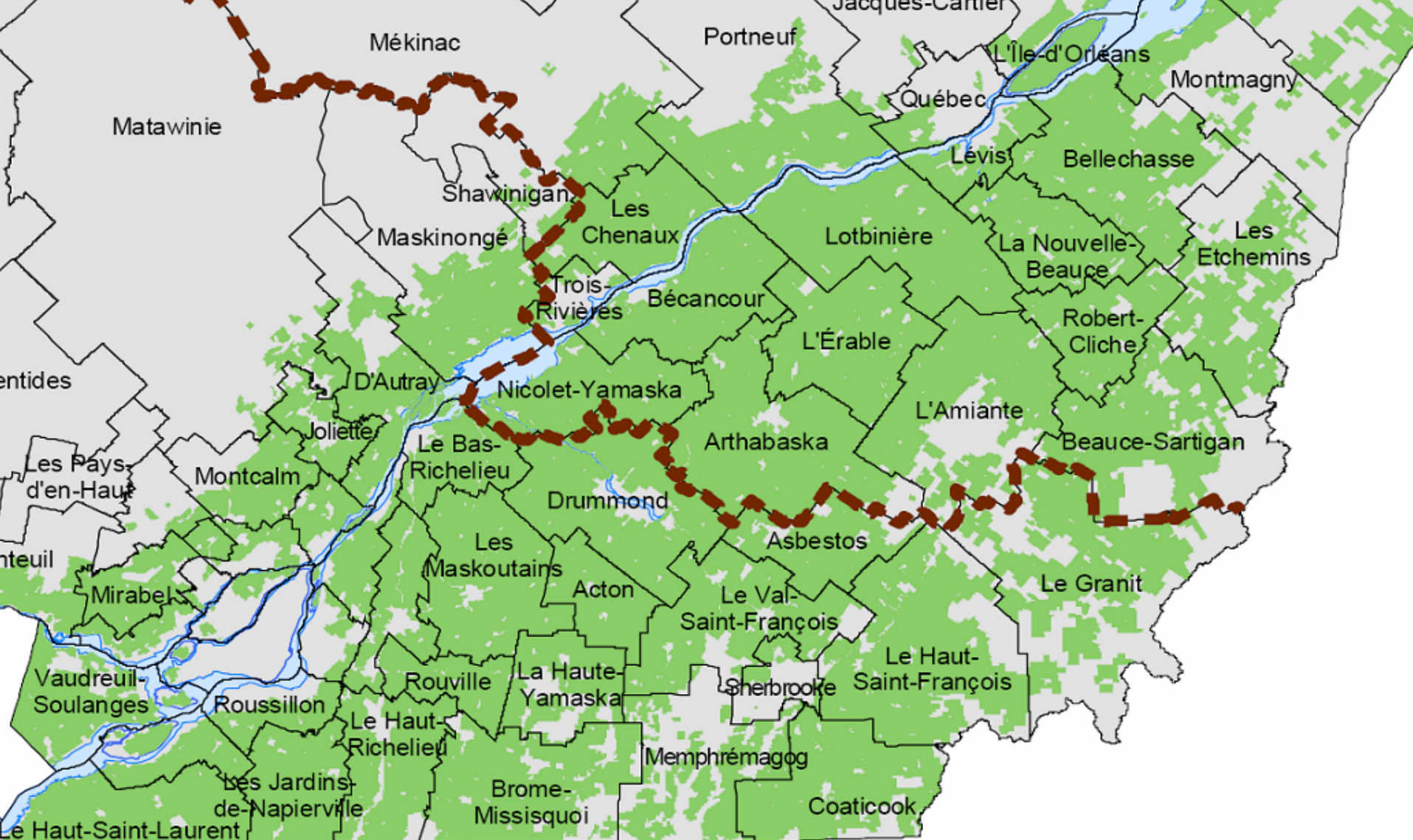
MONTREAL CMA (1951-2001)



Source: Calculated from Statistics Canada data (City of Montreal refers to 2001 Boundaries).

**MONTREAL URBAN
AREA POPULATION
DENSITY IN 2001
= 1800/km²**

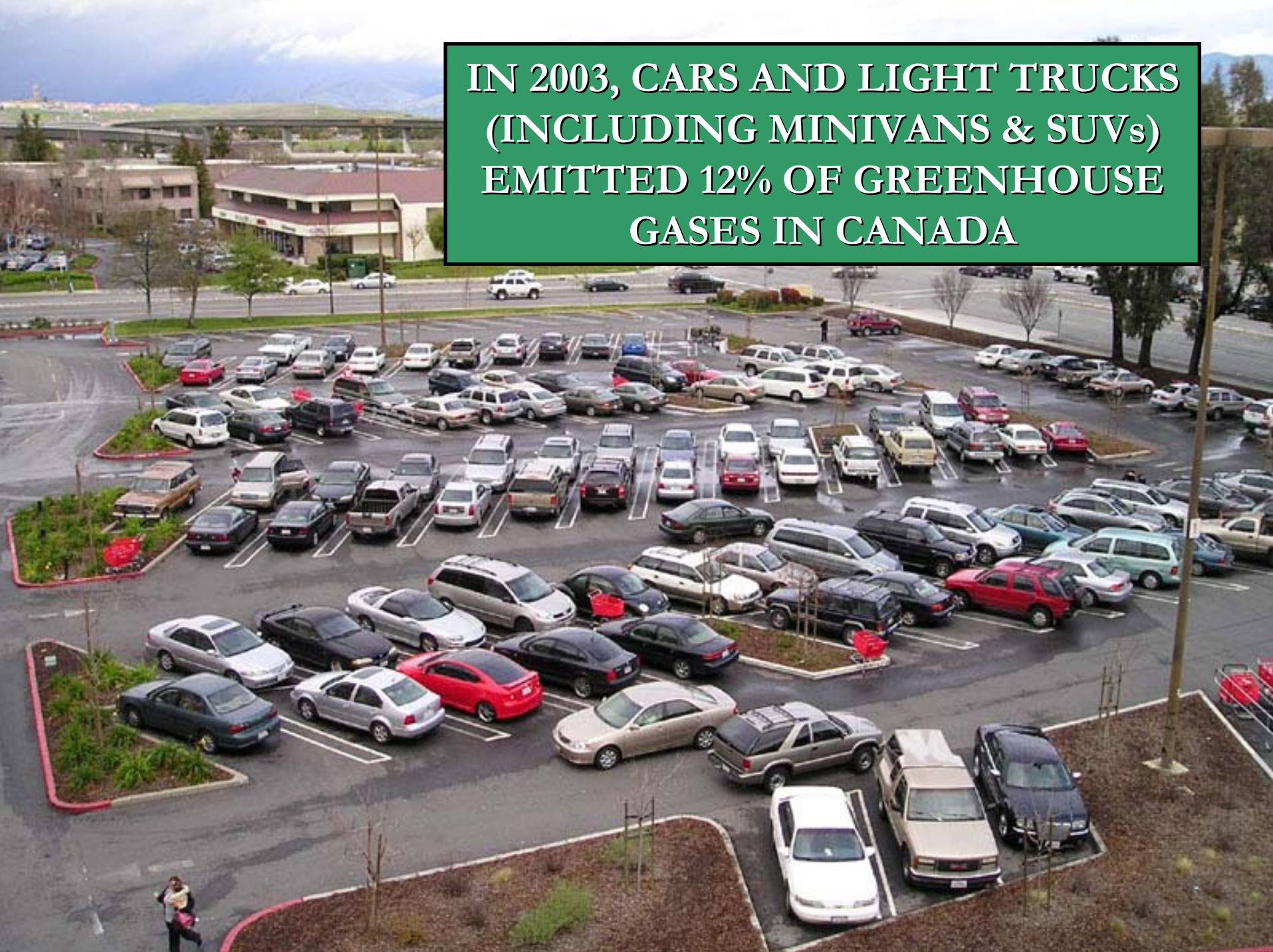




AGRICULTURAL LAND

**URBAN LAND ACCOUNTS FOR
18% OF TOTAL URBAN AND
AGRICULTURAL LAND IN QUEBEC
AND FOR 3% IN CANADA**

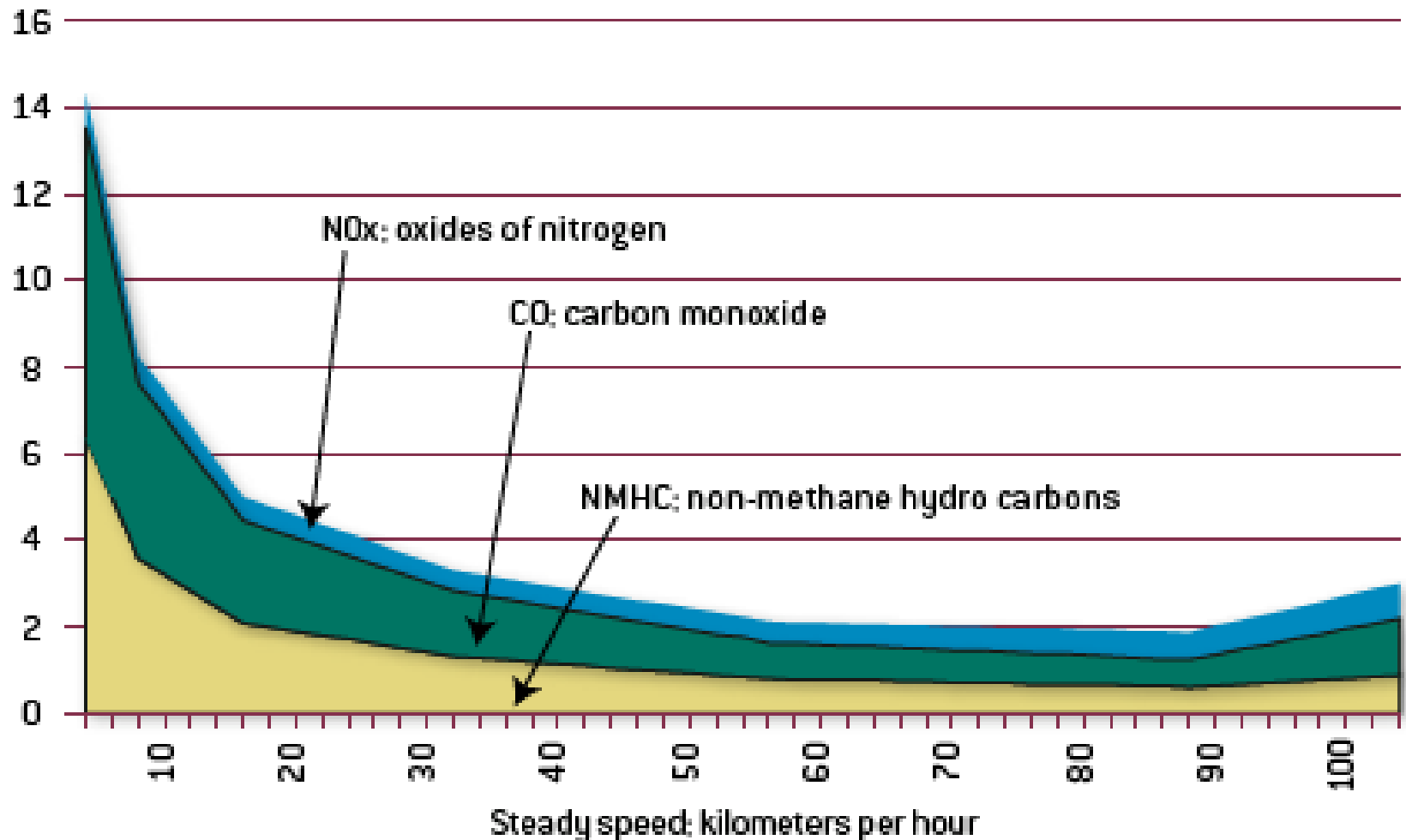
**IN 2003, CARS AND LIGHT TRUCKS
(INCLUDING MINIVANS & SUVs)
EMITTED 12% OF GREENHOUSE
GASES IN CANADA**



Air Pollution Emissions & Speed

SLOWER SPEEDS: GREATER EMISSIONS

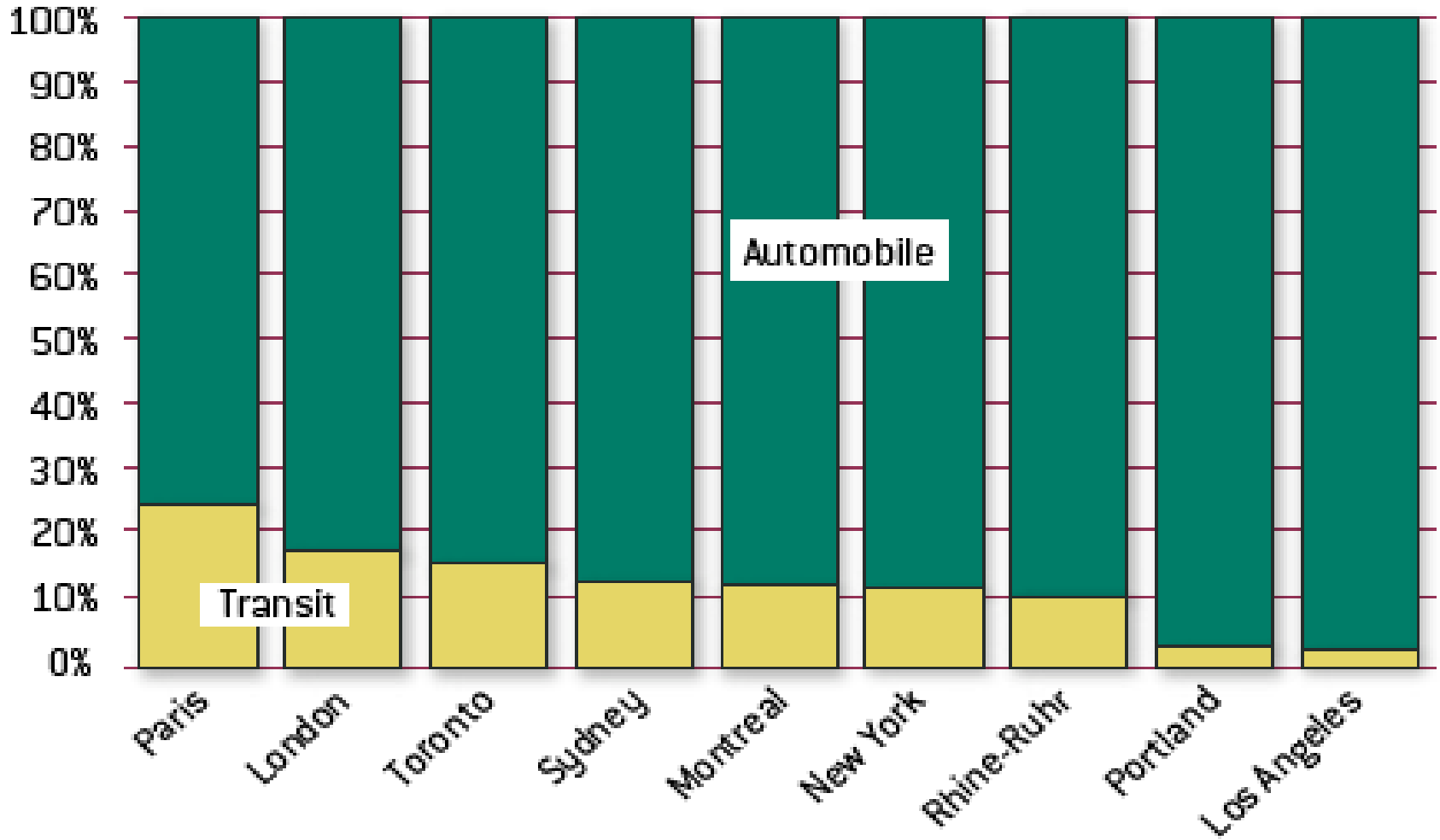
Grams Emitted @ 10°C per kilometer



Source: Calculated from US Environmental Protection Agency data.

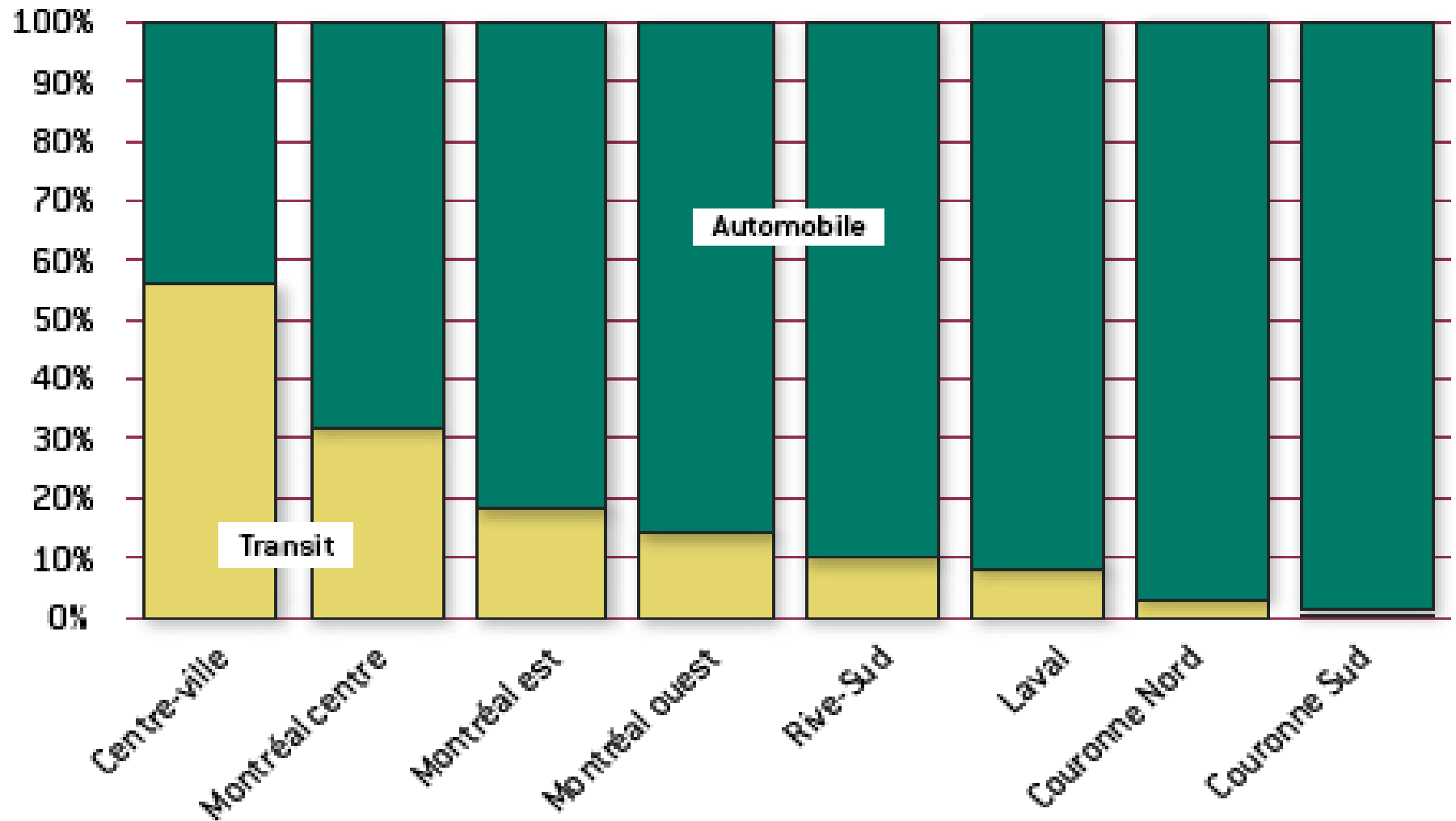
Transit & Automobile Market Share

INTERNATIONAL URBAN AREAS



Transit & Auto Market Shares

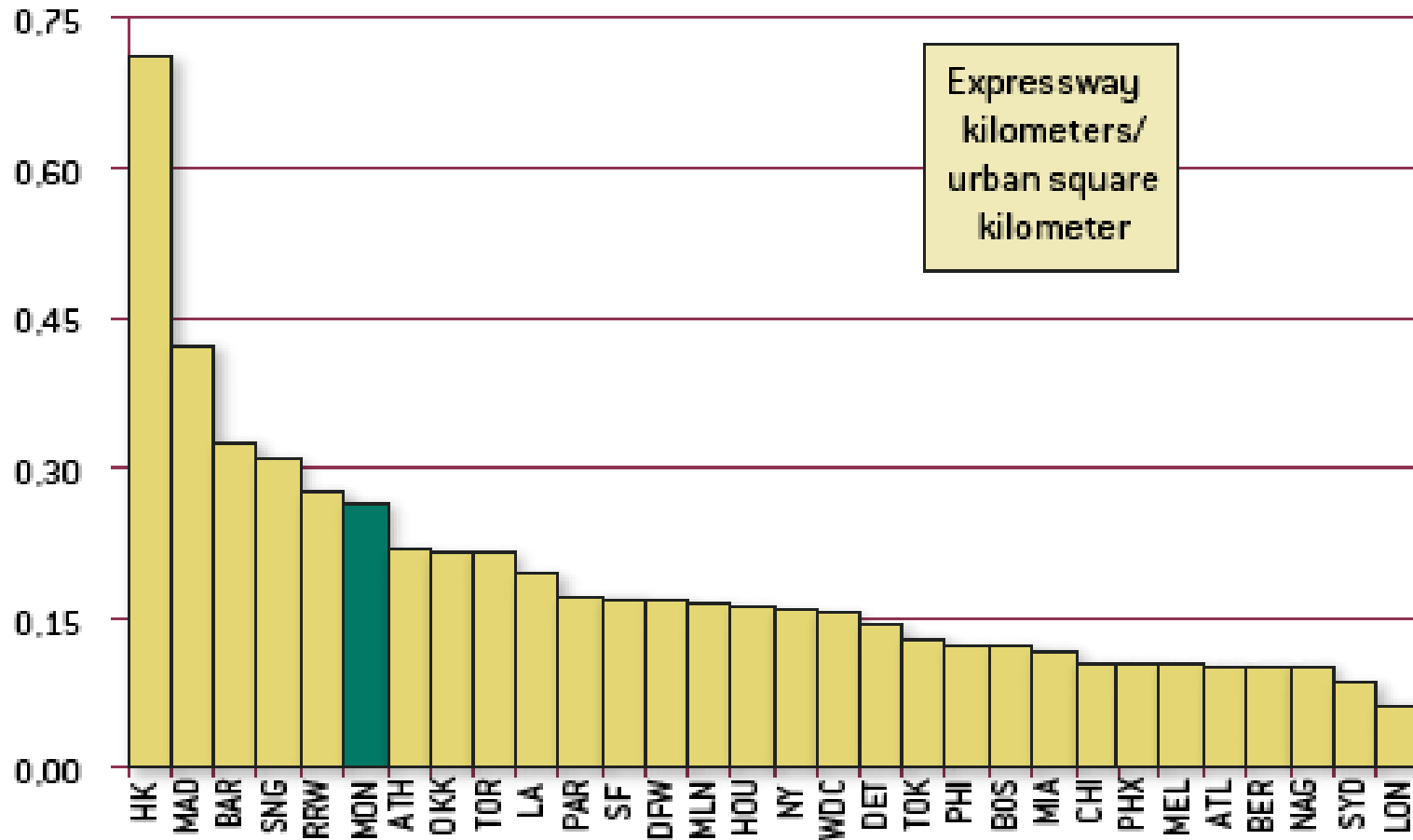
BY DESTINATION: AM PEAK PERIOD (2003)



Source: Origin-Destination Studies.

Expressway Access: High-Income World

URBAN AREAS OVER 3,000,000



Source: *Major High-Income World Urban Areas: Freeway Access and Capacity*, available at <http://www.publicpurpose.com/ut-worldfwy.htm>.



LANAUDIÈRE

LAURENTIDES

LAVAL

MONTREAL

MONTÉRÉGIE